



Cinnabar Sky Dress & Top

ladies xxs-xxxl

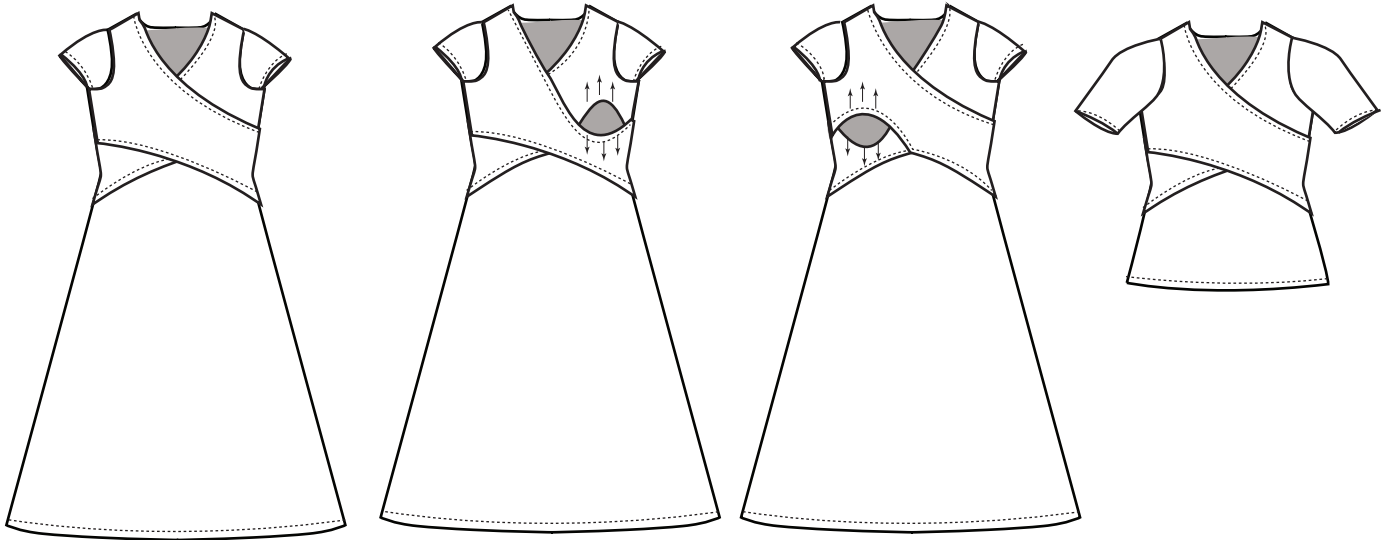
Golden Rippy

sewing pattern by
Rachel Hunsaker

© Golden Rippy 2014. This pattern is for individual, home use only. This pattern may not be reproduced, copied, shared or distributed in any way. You may sell items you make from this pattern, as long as they are made on a small scale production at home. Not for commercial use. Thank you. :)

Cinnabar Sky Dress

The Cinnabar Sky Dress is a knit maxi dress with a crossover front. Featuring a fitted bodice, it is roomy enough for maternity bellies. Options include: discrete nursing openings, short or half sleeves and optional top length.



Sizing & Measurements

Always measure yourself first (or the person that will be wearing it) to determine proper size.

SIZE	BUST	HIPS
XXS	30-33	31-34
XS	34-35	35-36
S	36-37	37-38
M	38-39	39-40
L	40-41	41-42
XL	42-45	43-46
XXL	46-48	47-49
XXXL	49-52	50-53

Fabric Requirements

<u>Size</u>	<u>Dress</u>		<u>Top</u>	
	45"	60"	45"	60" WIDTH
xxs	3 1/2	3	2 1/2	1 1/3 YARDS
xs	3 1/2	3 1/4	2 1/2	1 1/3
s	3 3/4	3 1/4	2 1/2	1 1/3
m	3 3/4	3 1/4	2 1/2	1 1/3
l	n/a	3 3/4	2 1/2	1 1/2
xl	n/a	4	2 1/2	1 1/2
xxl	n/a	4	2 1/2	1 1/2
xxxl	n/a	4	2 2/3	1 2/3

Before you start

Recommended Fabrics

- * This pattern is made for stretchy knits such as cotton jersey, interlock, spandex, bamboo blends, rayon jersey and other similar knits with 30% stretch. (3 inches of fabric will stretch to 4 inches long) 60" wide fabric. PREWASH fabric before cutting.
- * Cut big pieces like the dress front and back FIRST, as close to the selvage edge as you can. Little pieces like sleeves can be cut out after the crossover pieces.

Notions

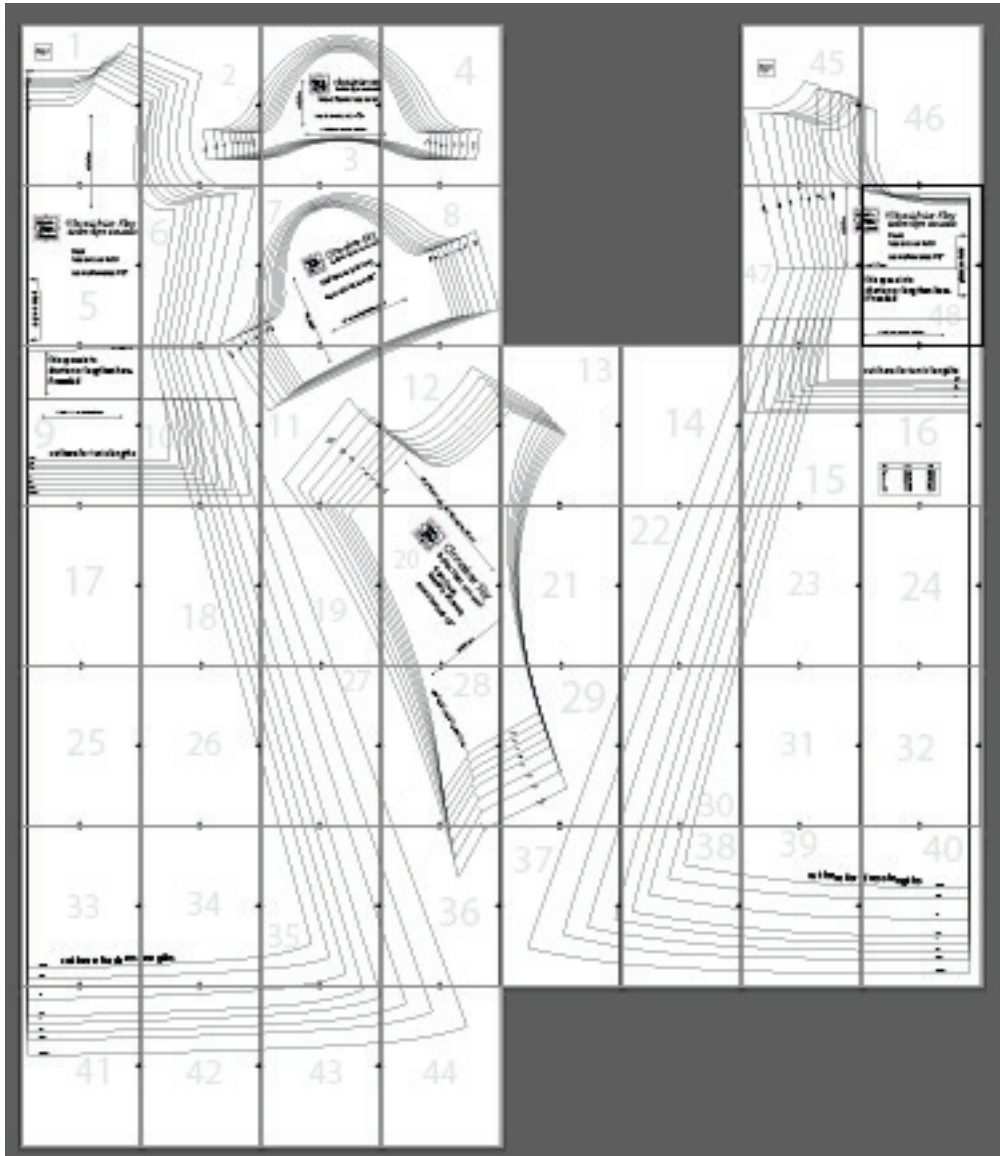
- * Ballpoint sewing needle (for knits)
- * Thread in coordinating color (or contrasting)

General Tips for Sewing

- * All seam allowances are 1/2" inch and are included, unless otherwise indicated. Please check to make sure you have all pattern pieces cut out before starting.
- * Grainlines are provided on the pattern pieces. The grainline runs parallel to the selvage edge. If you need to check your grainline, use a measuring tape from the top arrow to the selvage edge and double check it against the bottom arrow to the selvage edge. Both distances should be the same.
- * If you need to adjust the pattern, draw a line between the sizes you need. Like the waist of a small to the bust of a medium. Cut along this new line. This is for minor size changes and alterations only. If you are between many sizes, choose the bigger size and make the pattern in that size.
- * It's also a good idea to make a muslin test first if you need to drastically change the sizing or if you are using really special fabric.
- * Test your stitch length and try to get 10-12 stitches per inch.
- * Most jersey does not need to be edge finished because it doesn't fray that much. Wovens should be serged, zigzagged on the edge, pinked or clean finished to prevent fraying.

Pattern Layout Guide

Print your pattern at 100% scaling “without borders” on 8.5” x 11” paper. Measure your test square on the pattern to insure proper sizing of pattern before continuing. Cut the top and right margins off the pattern and overlap the edges. Tape together. Cut out



Printing Guide

For dress:

Short sleeve- Print pages 8-15, 18-55

Half sleeve- Print pages 8-9, 12-55

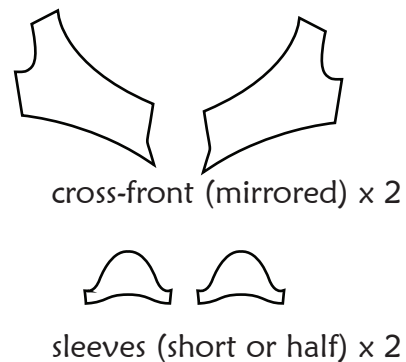
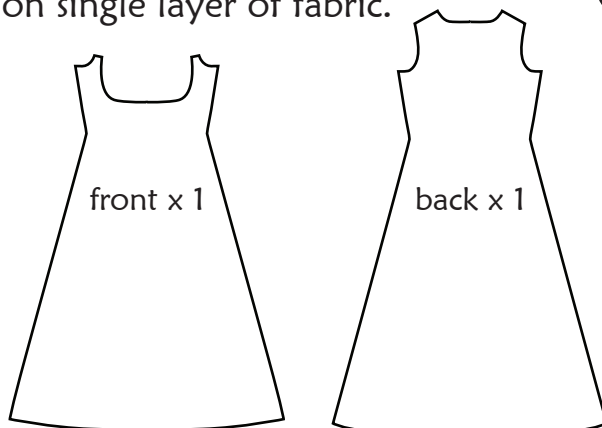
For top:

Short sleeve- Print pages 8-15, 18-24, 26-27, 30-32, 39-40, 47

Half sleeve- Print pages 8-9, 12-24, 26-27, 30-32, 39-40, 47

Pieces to Cut

(All sizes) Cut on single layer of fabric.



Instructions

**Instructions will show the dress,
but the steps are the same for the top **

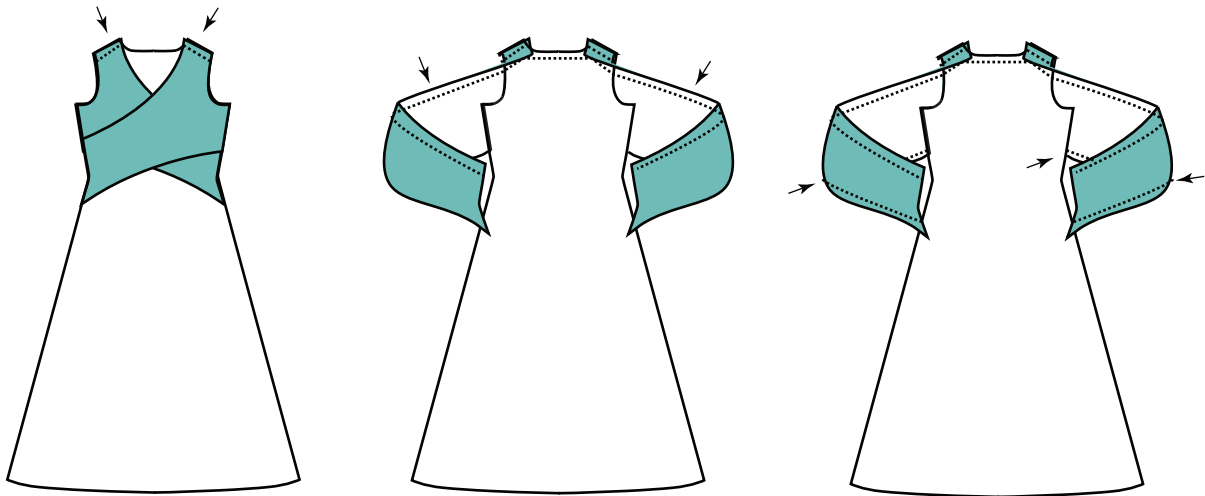
KEY

right side

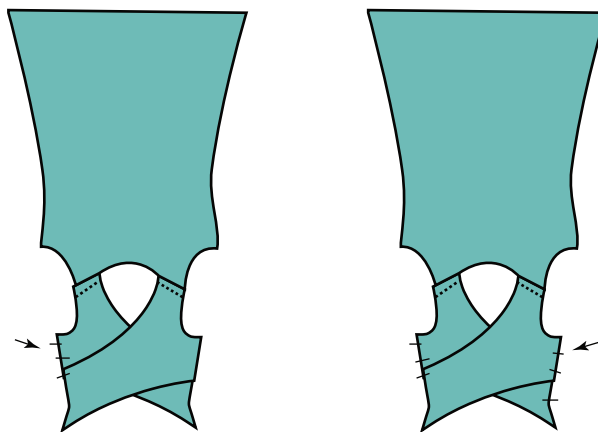
inside

Sew Cross-Front Bodice

1. With right sides together, stitch the right and left bodice pieces to the shoulder seams on the dress back.
2. Serge or turn under the 1/2" on the neckline, all the way around. Topstitch the neckline down, or finish as desired with a stretch stitch.
3. Serge or turn under the 1/2" seam allowance, and sew around the bottom of the left cross piece. Repeat for other cross piece.



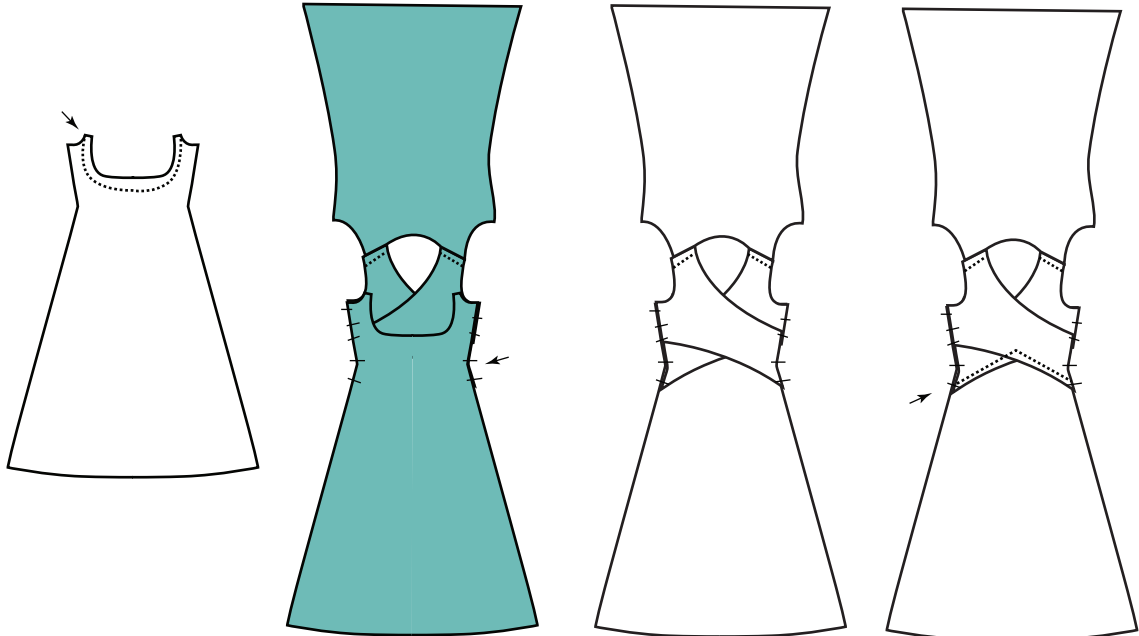
4. With right sides facing down, pin down left cross-front pieces on top of other. Match under arm seams and notches at the waist. Repeat with right cross-front piece, matching sides and notches on top of left.



Instructions (continued)

Sew Front of Dress:

5. On the top edge of the dress front, fold 1/2" seam allowance down and stitch closed. This seam will be hidden. (The front of the dress is made to go under the bust and connects to the underarm seam to provide extra support for the maxi dress. This design feature makes sure the weight of the fabric will not cause the front of the dress to sag or pucker. It provides the hidden foundation layer.)
6. Pin dress front on top of crossed pieces, with right side down and matching side notches. Turn over.
7. Topstitch the bottom edge of the crossed pieces to the dress front.

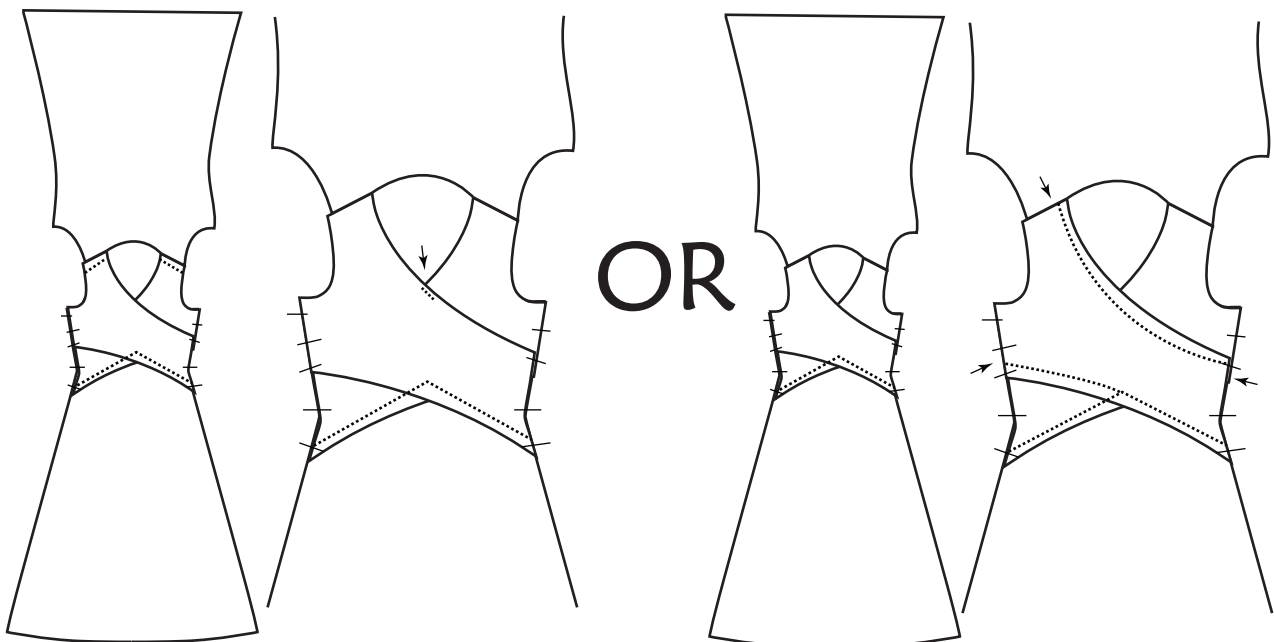


Make nursing openings

For Version without nursing openings

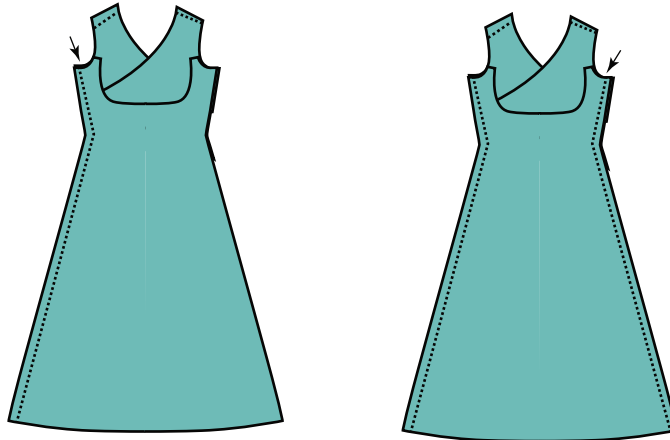
8. Topstitch the neckline point together.

8. Topstitch the crossed pieces together.



Instructions (continued)

9. With right sides facing each other, sew the side seams of the dress.

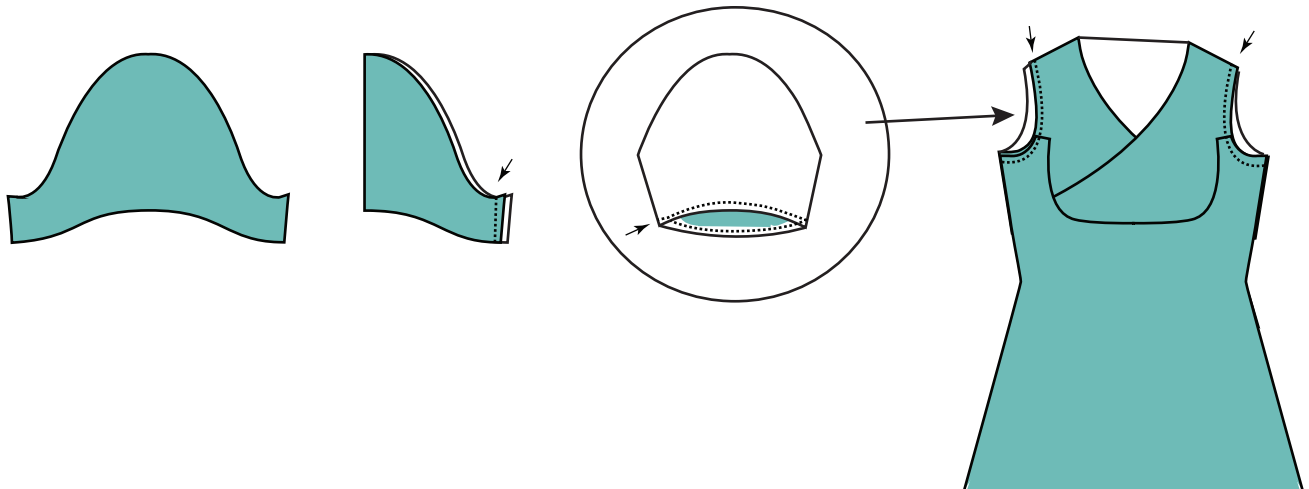


Sew Sleeves:

10.. With right side facing, sew underarm seams.

11. (Hem sleeves). Turn 1/2" under and topstitch the outer hem.

12. With right sides facing, ease sleeve caps into dress, matching top of cap with shoulder. Sew to dress.



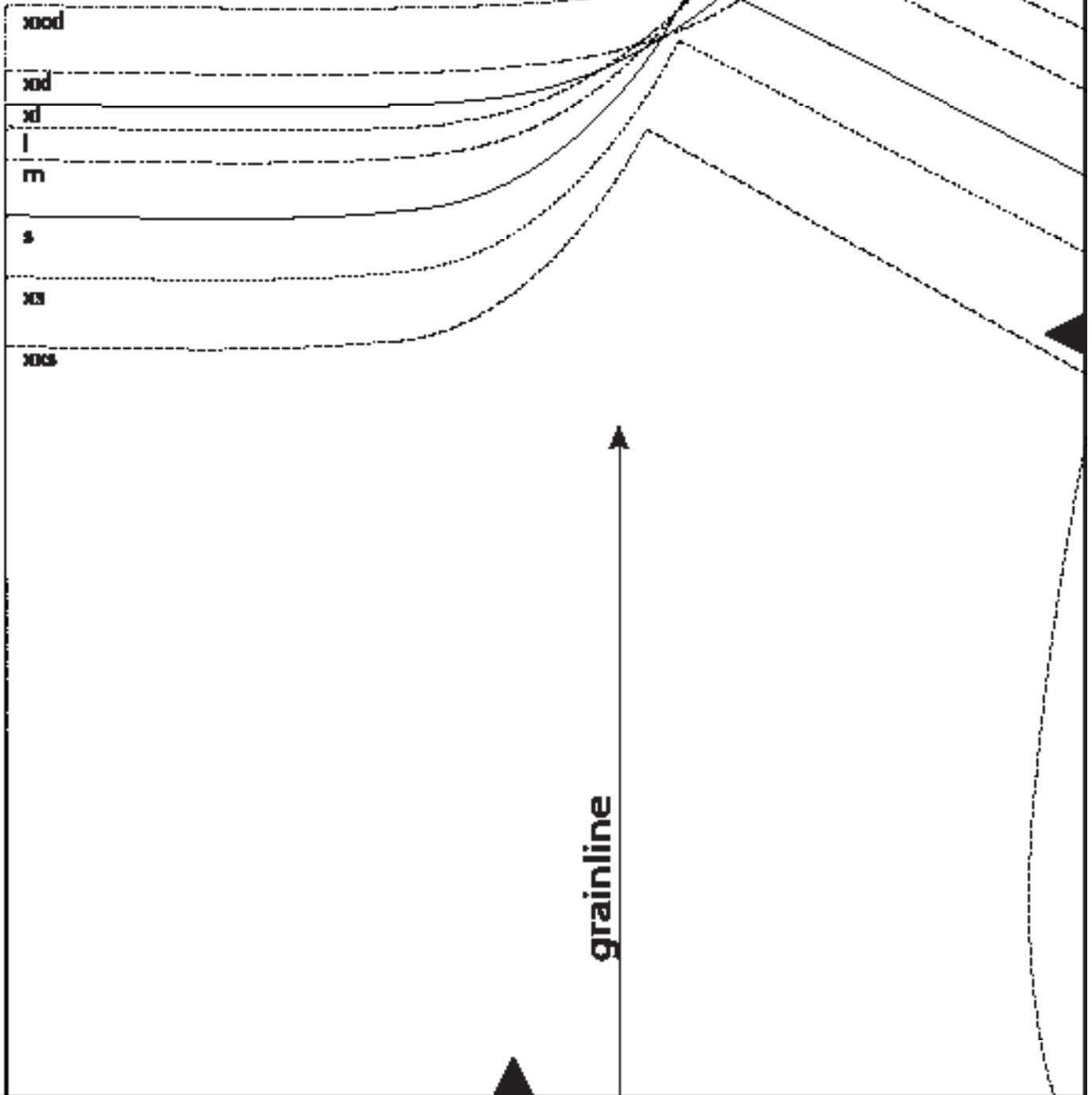
Hem the bottom:

13. Try on the dress and mark your desired hem. Serge edge and topstitch OR turn under 1/2" and topstitch the hem.

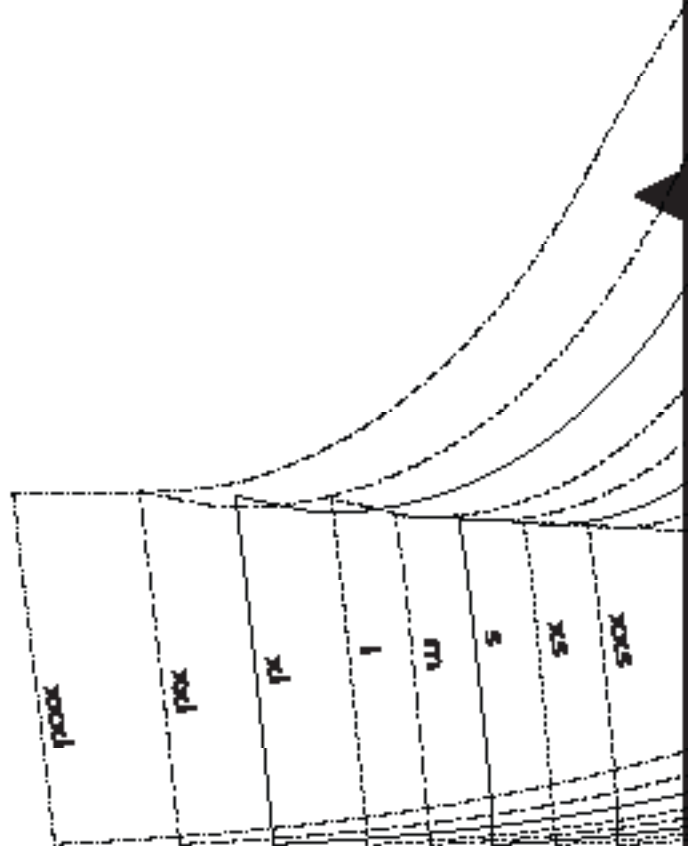
14. Enjoy your pretty dress (or tunic)! And post pictures! :) #cinnabarsky #goldenrippy

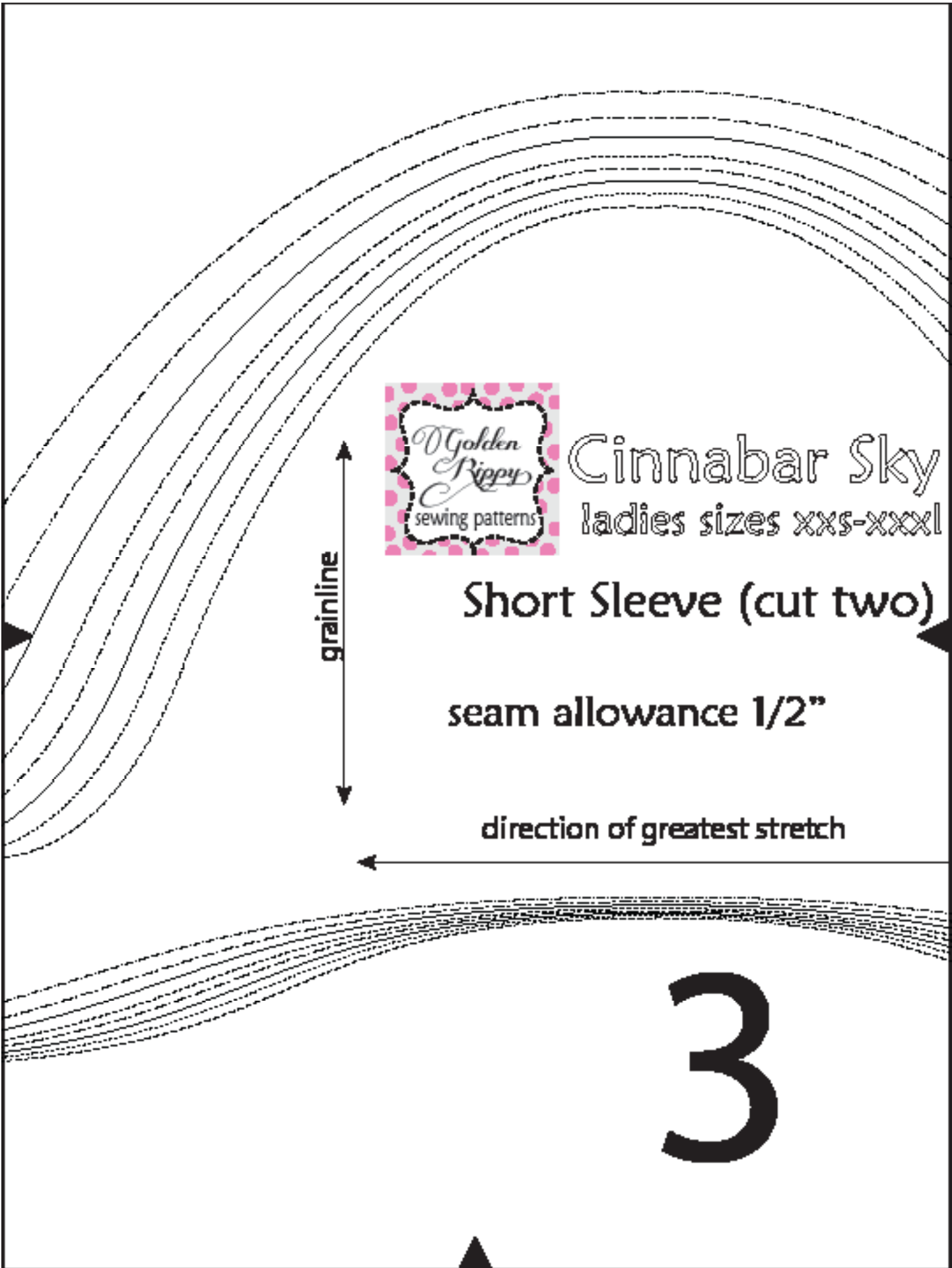
Make sure this
test square is
1 inch

1



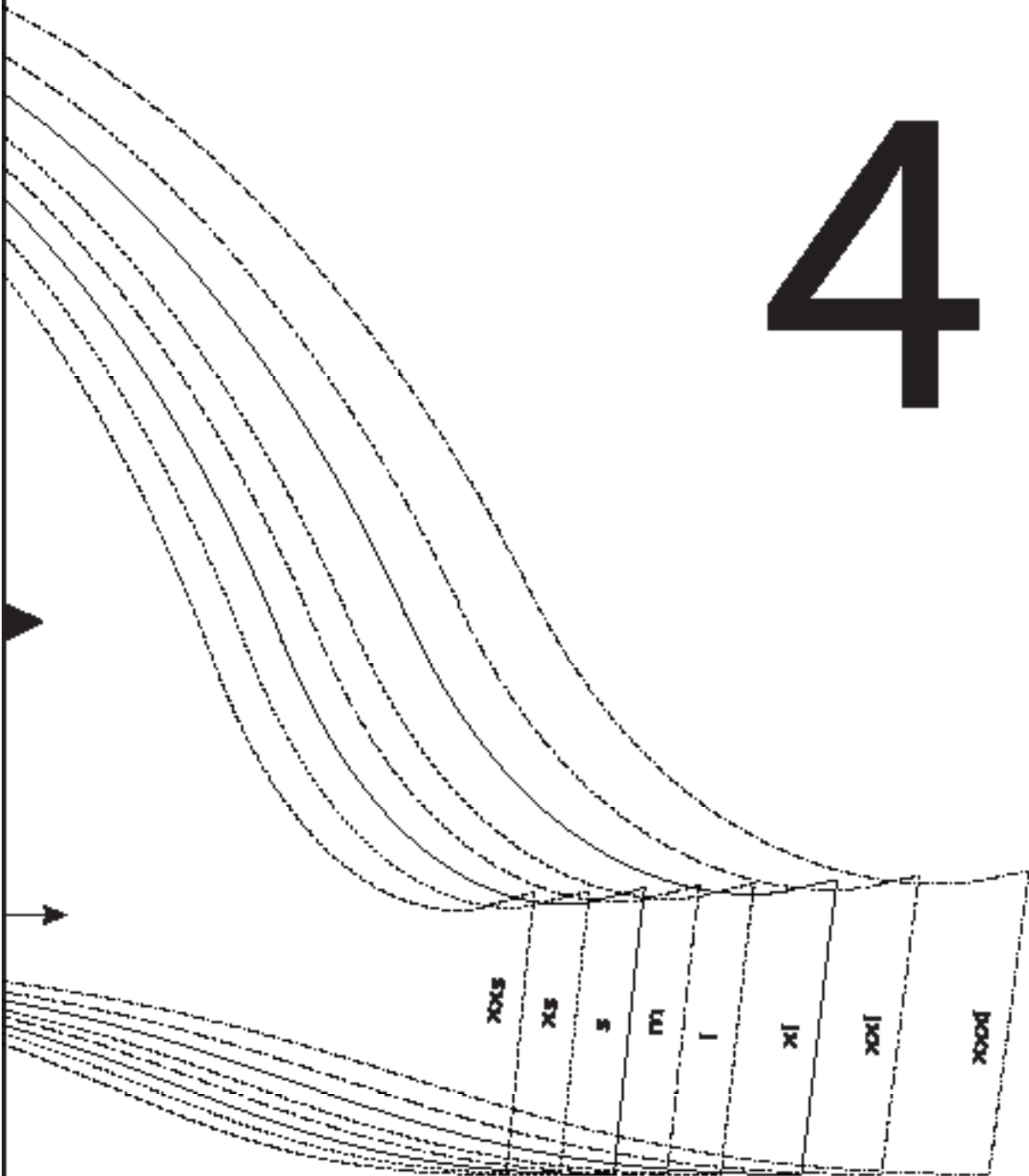
2





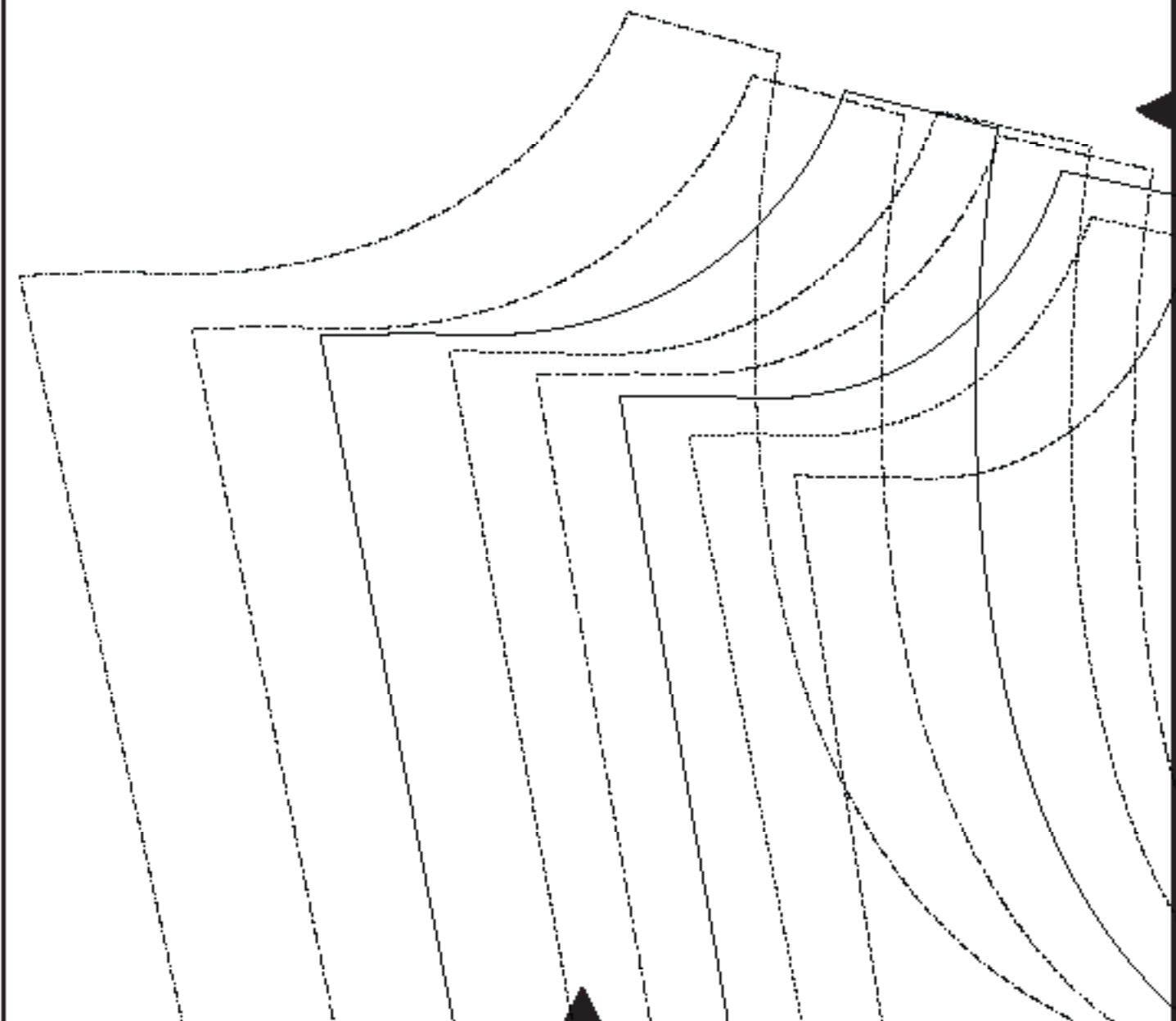
3

4



45

Make sure this
test square is
1 inch





46



Cinnabar Sky

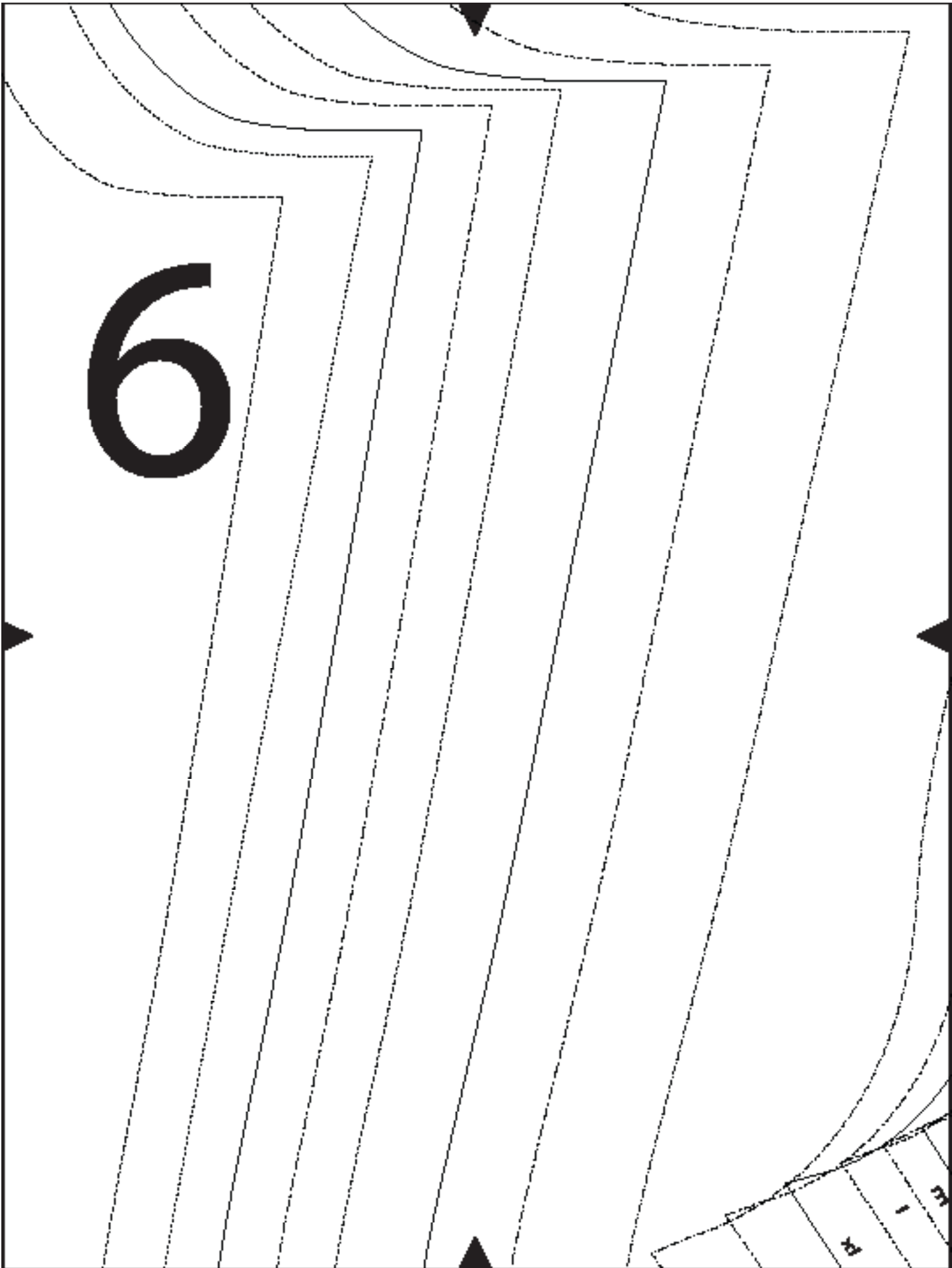
ladies sizes xxS-xxxL

Back
(cut one on fold)

seam allowance 1/2"

place on fold

5



7



Cinnabar Sky
ladies sizes *xxs-xxxl*

Half Sleeve (cut two)

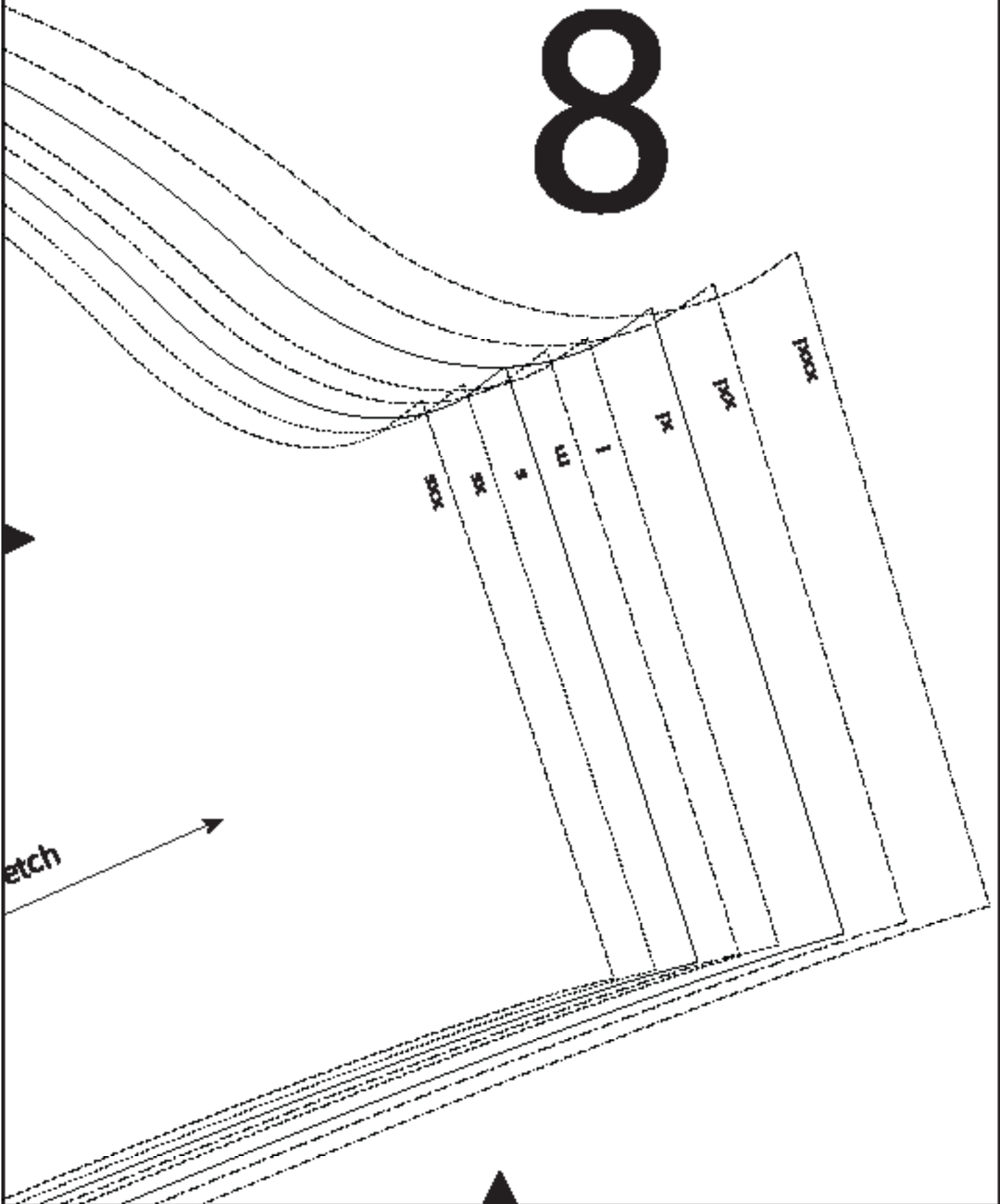
seam allowance 1/2"

grainline

direction of greatest stretch

xxs
xs
s

8



47

POX

POX

XL

L

M

S

XS

SXX

grainline





Cinnabar Sky

ladies sizes xxS-xxxL

Front
(cut one on fold)

seam allowance 1/2"

▶ waistline

this space is to
shorten or lengthen here,
if needed

place on fold

48

direction of greatest stretch

waistline



this space is to
shorten or lengthen here,
if needed

direction of greatest stretch



cut here for top lengths

xxxl

xxl

xl

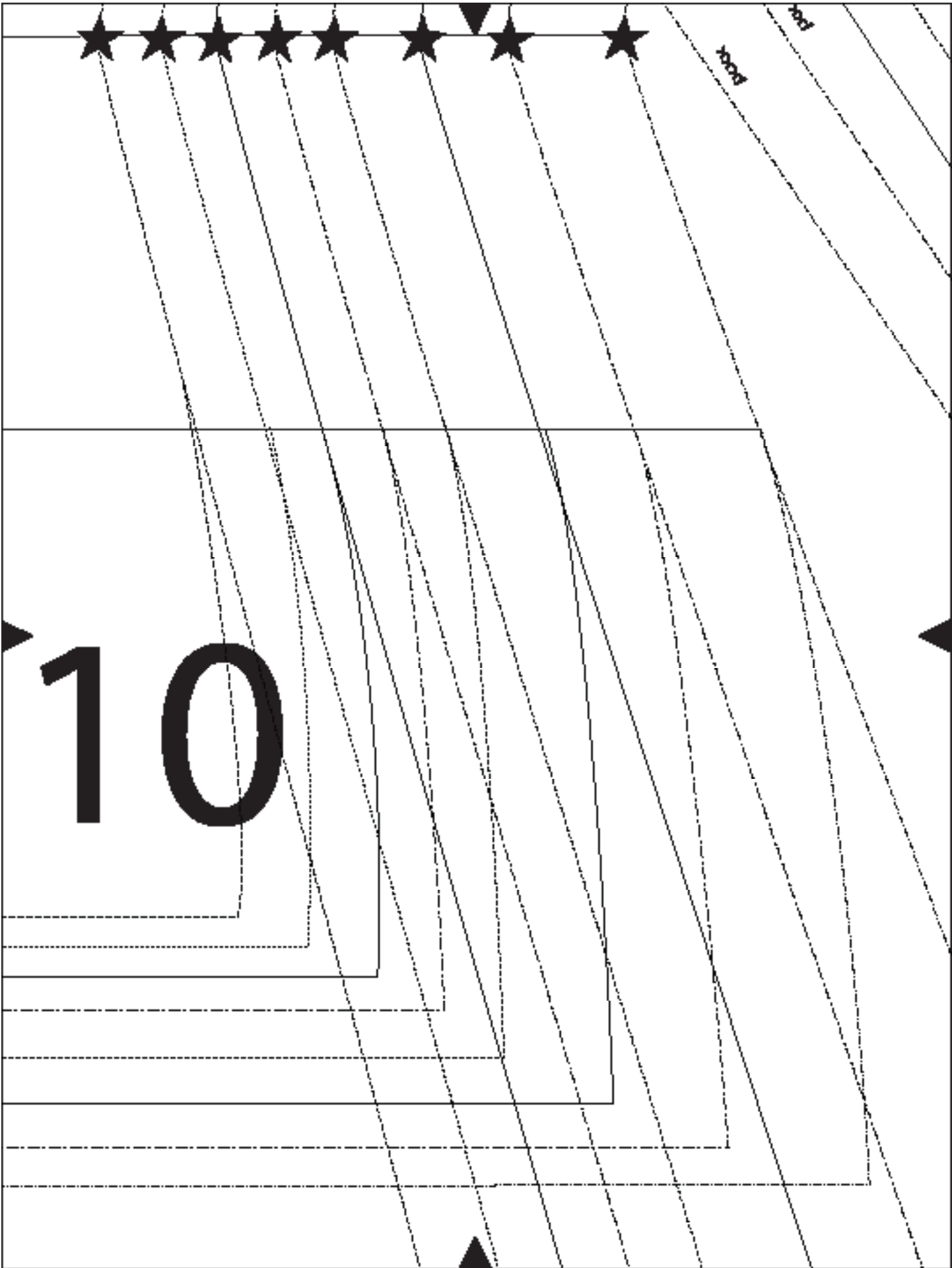
m

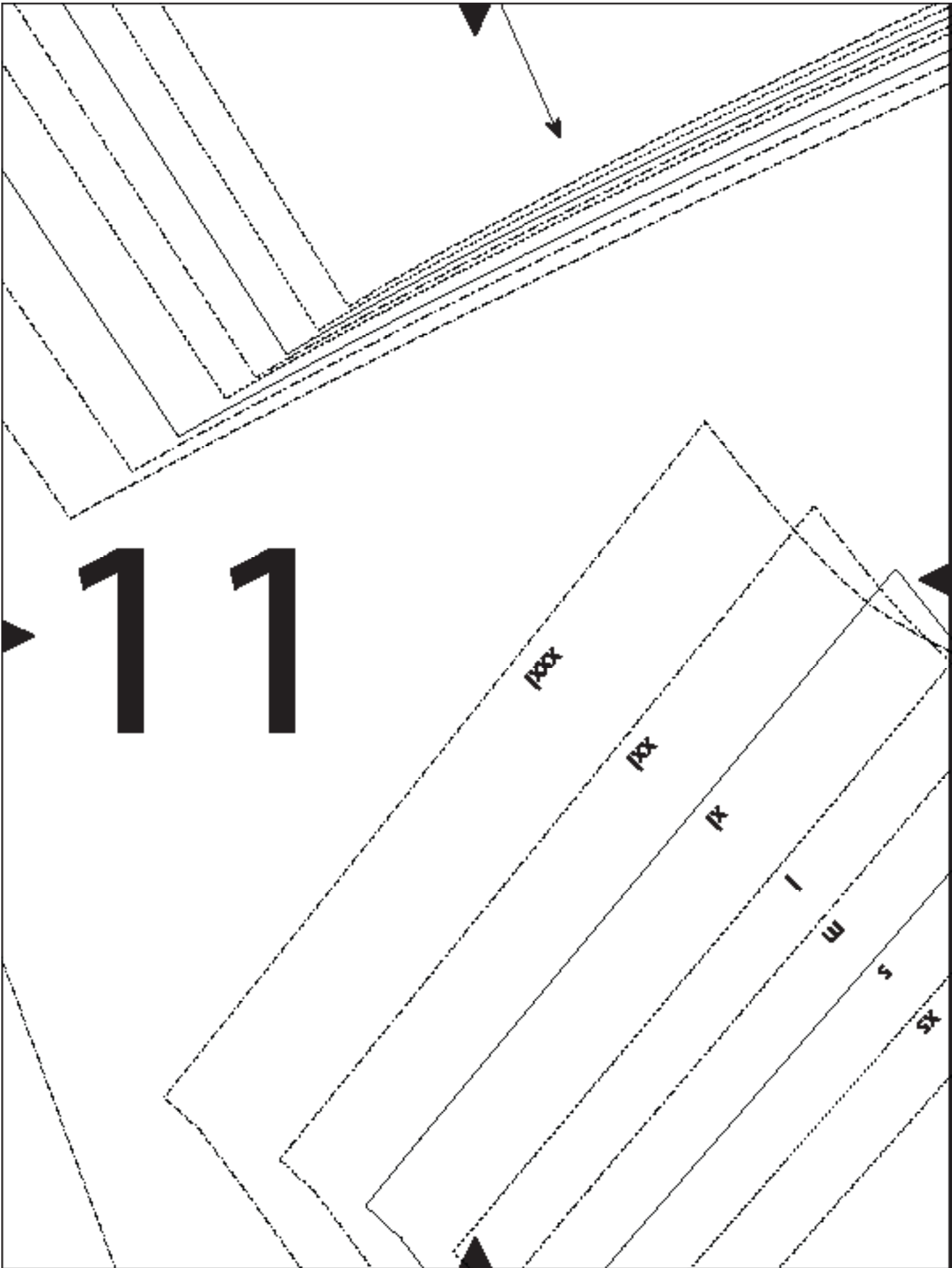
l

xl

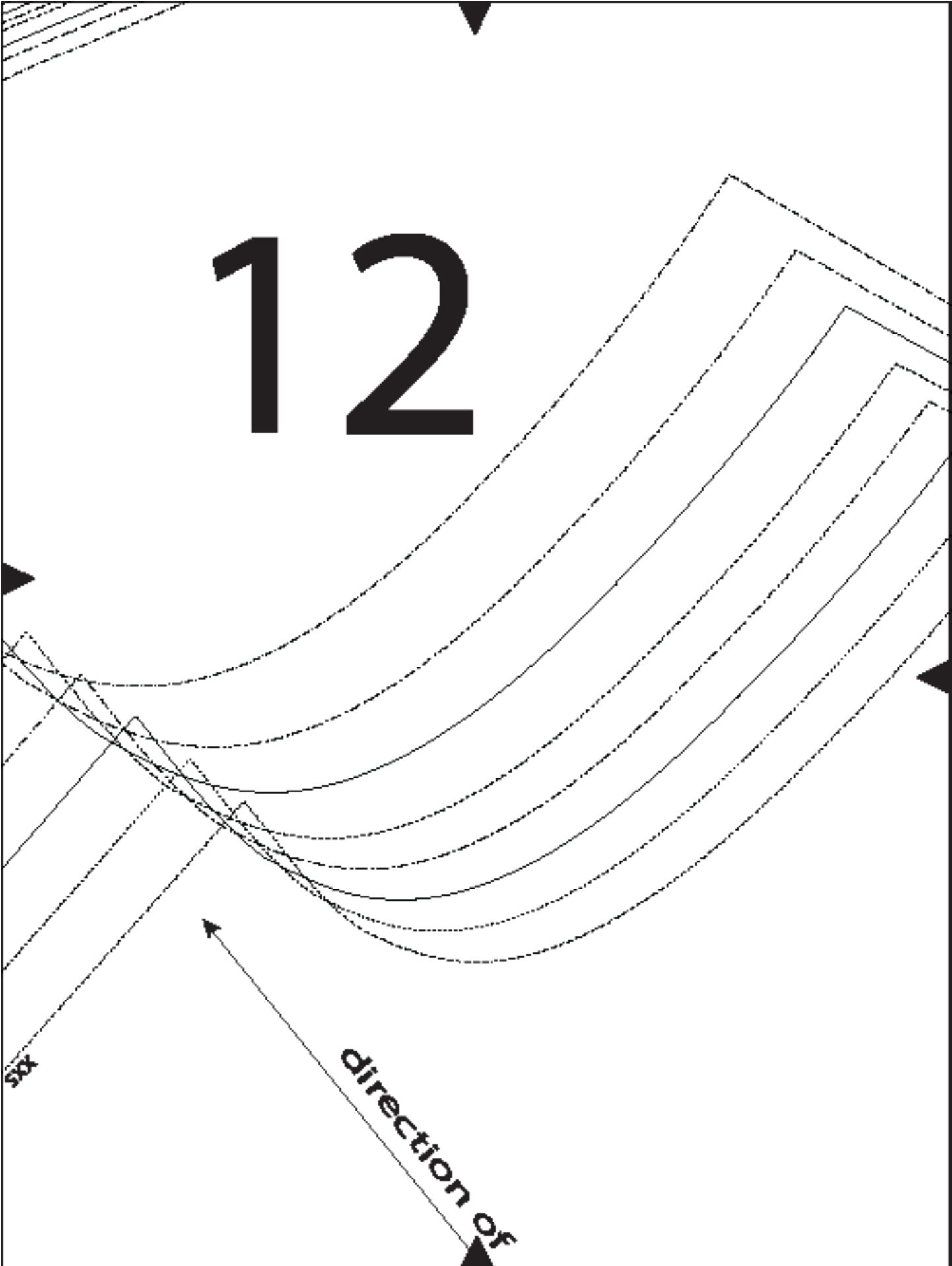
xxl

xxxl

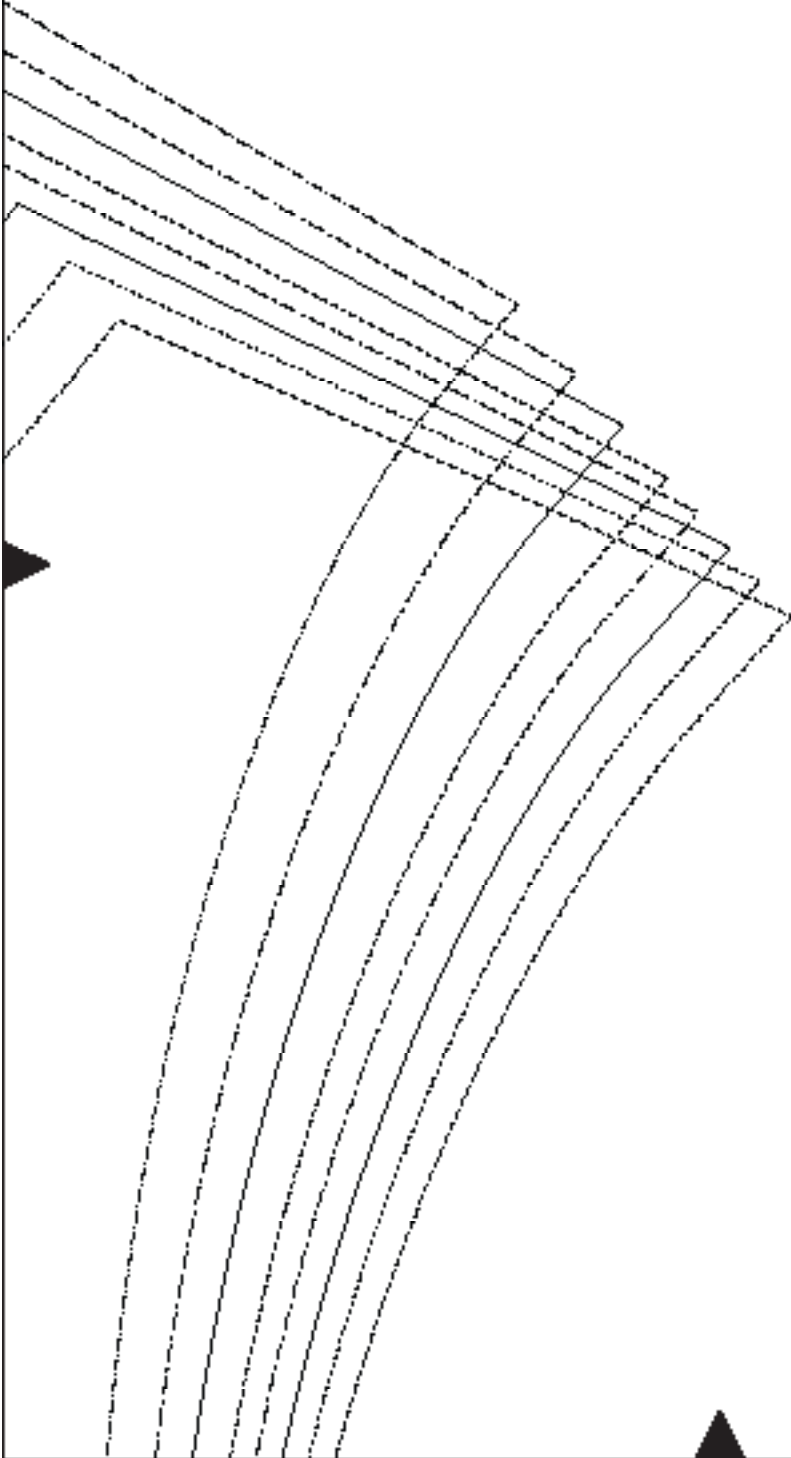




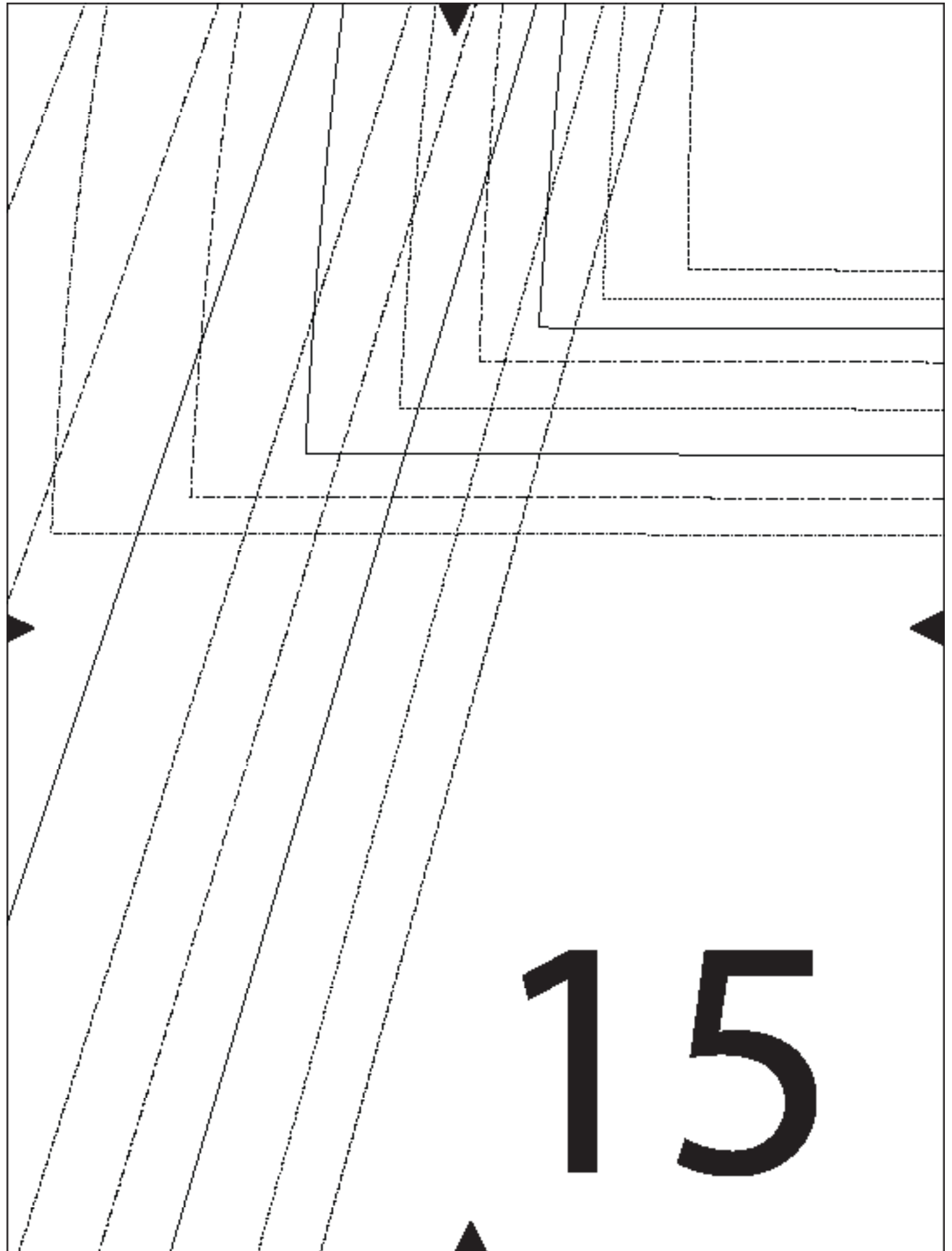
12



13



14



15

cut here for top lengths

XXS

XS

S

M

L

XL

XXL

XXXL

16

SIZE	BUST	HIPS
XXS	30-33	31-34
XS	34-35	35-36
S	36-37	37-38
M	38-39	39-40
L	40-41	41-42
XL	42-45	43-46
XXL	46-48	47-49
XXXL	49-52	50-53

17



18



19



greatest stretch

20

Cinnabar SKL
ladies sizes xxS-xxxL

Cross Front
(cut two, mirrored)
seam allowance 1/2"

grainline



21

22



23

24

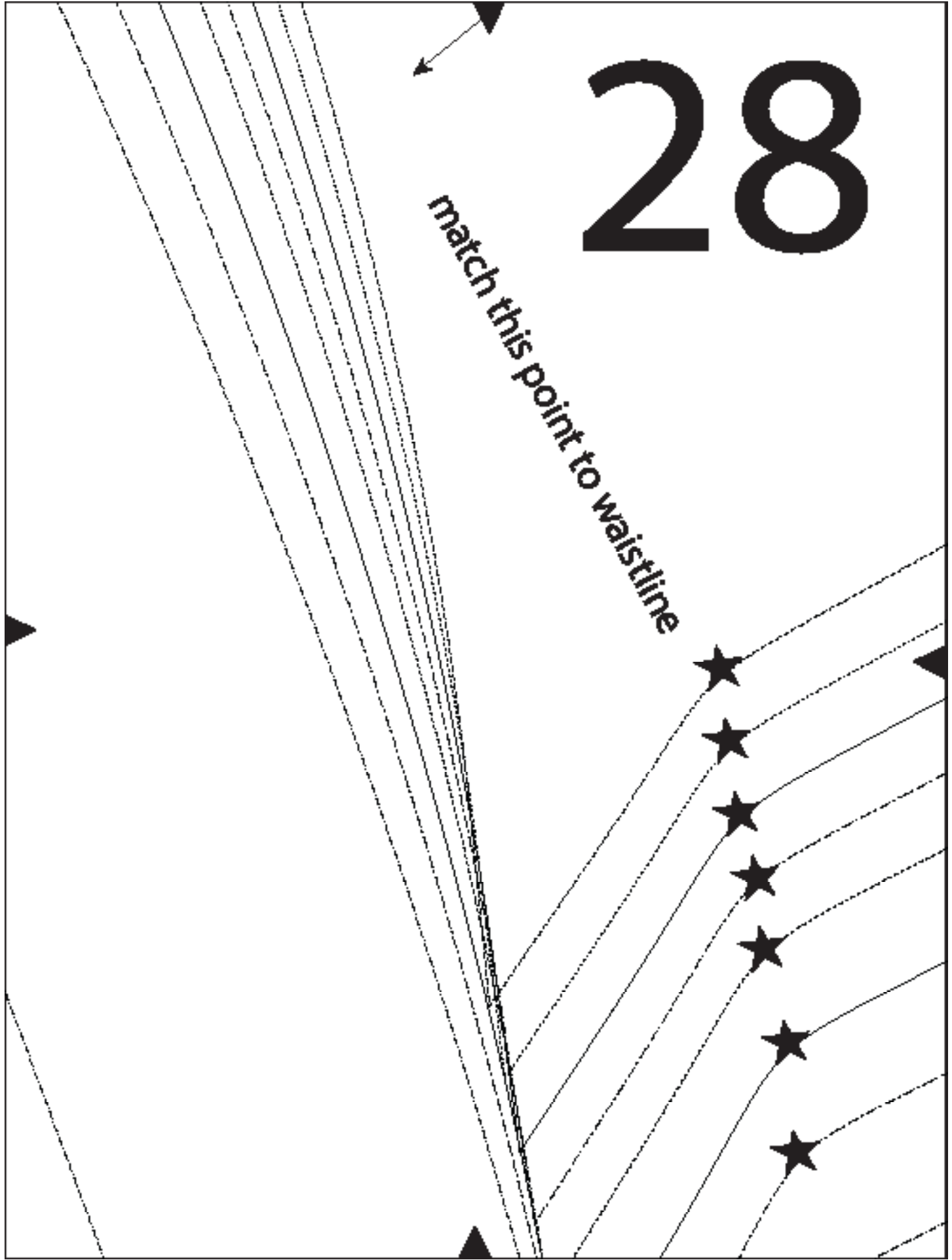
25

26

27

28

match this point to waistline



29

xs

xs

s

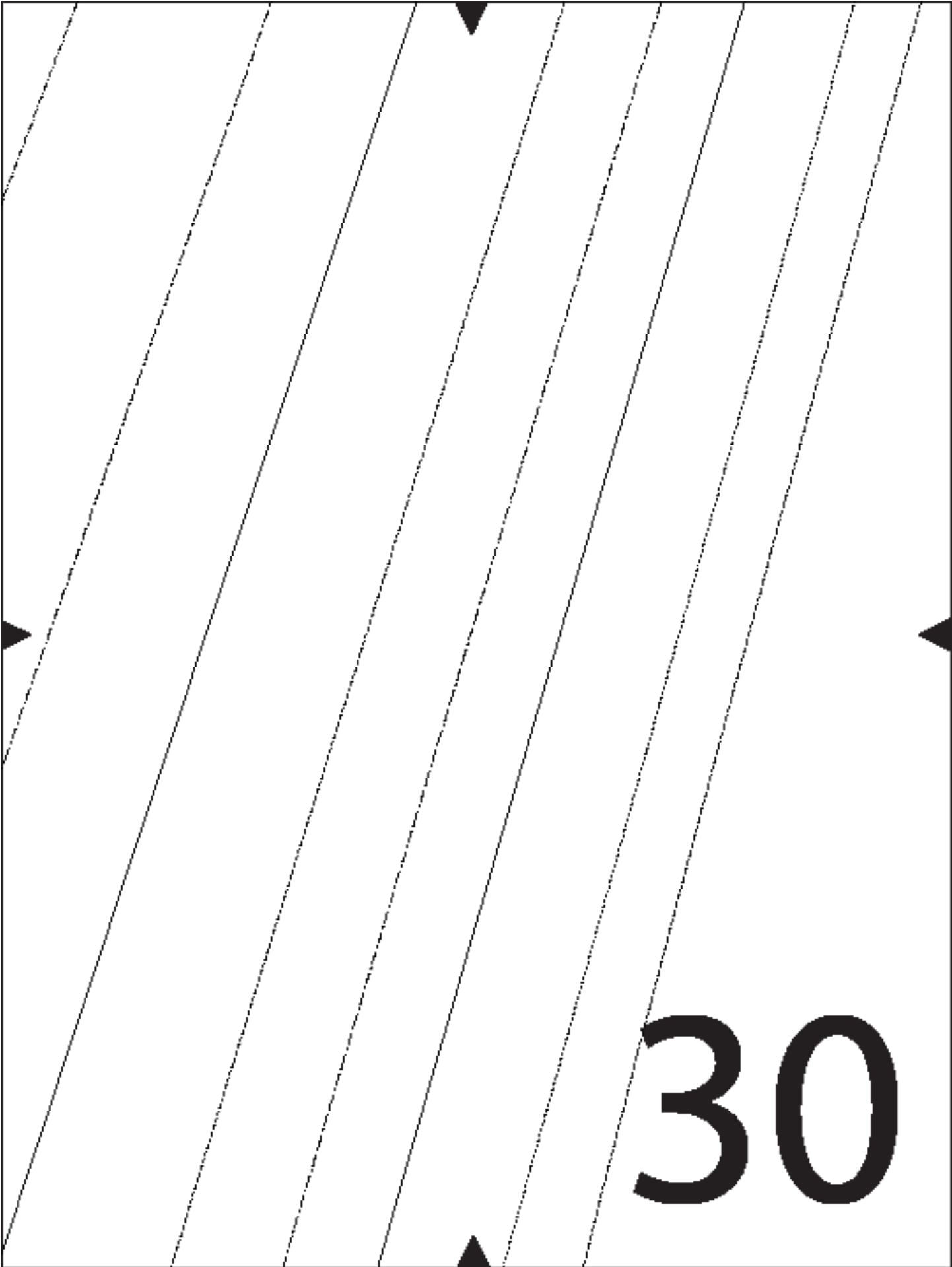
m

l

ix

ix

ix



31

32

33

cut here for dress

XXS

XS

34

lengths

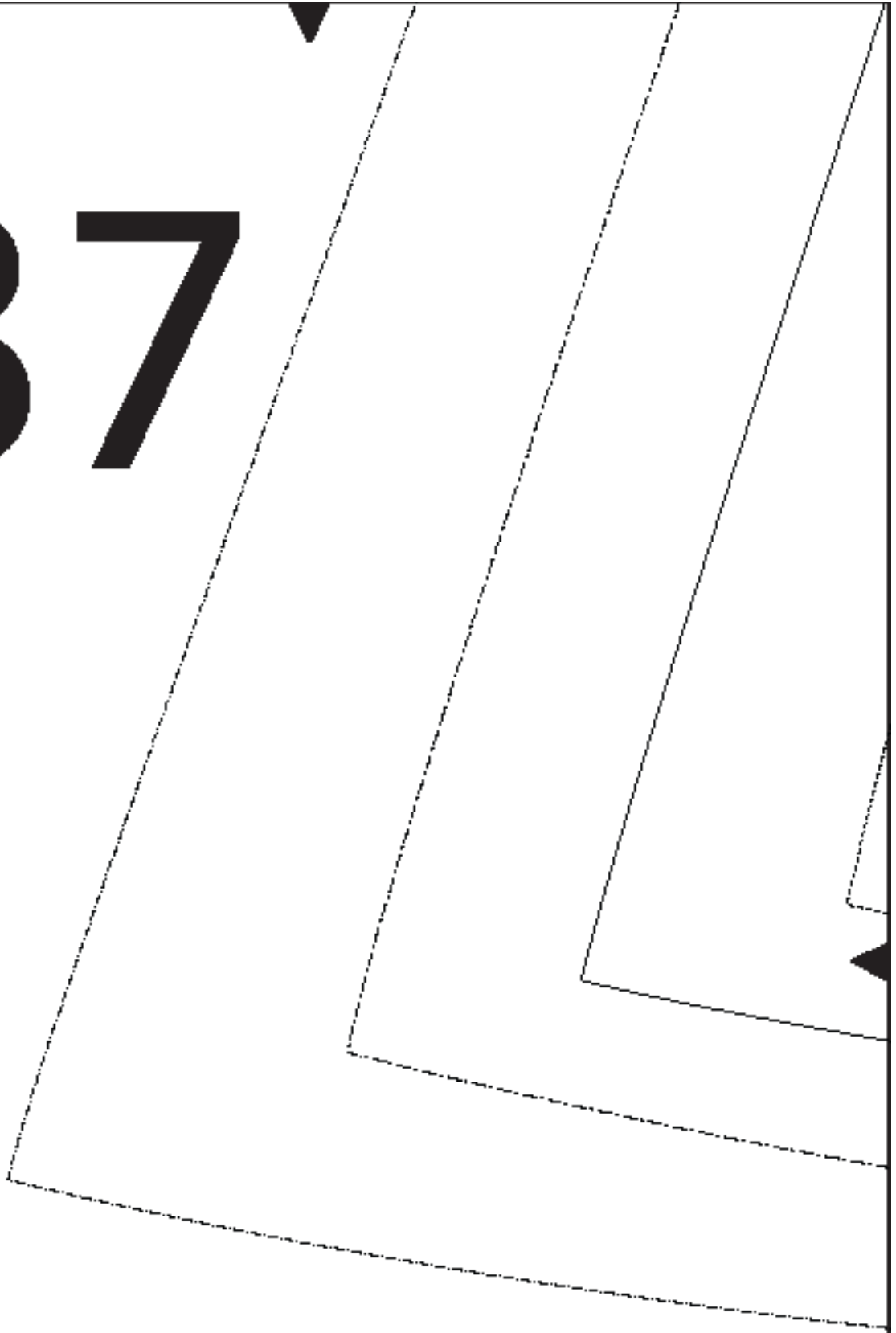
A large, bold number '35' is centered on a tilted rectangular card. The card is outlined with a solid line and has a dashed line just inside it. Four black arrowheads point towards the corners of the card: one at the top, one at the bottom, one on the left, and one on the right. The background of the page features several parallel diagonal lines, some solid and some dashed, creating a grid-like pattern.

35



36

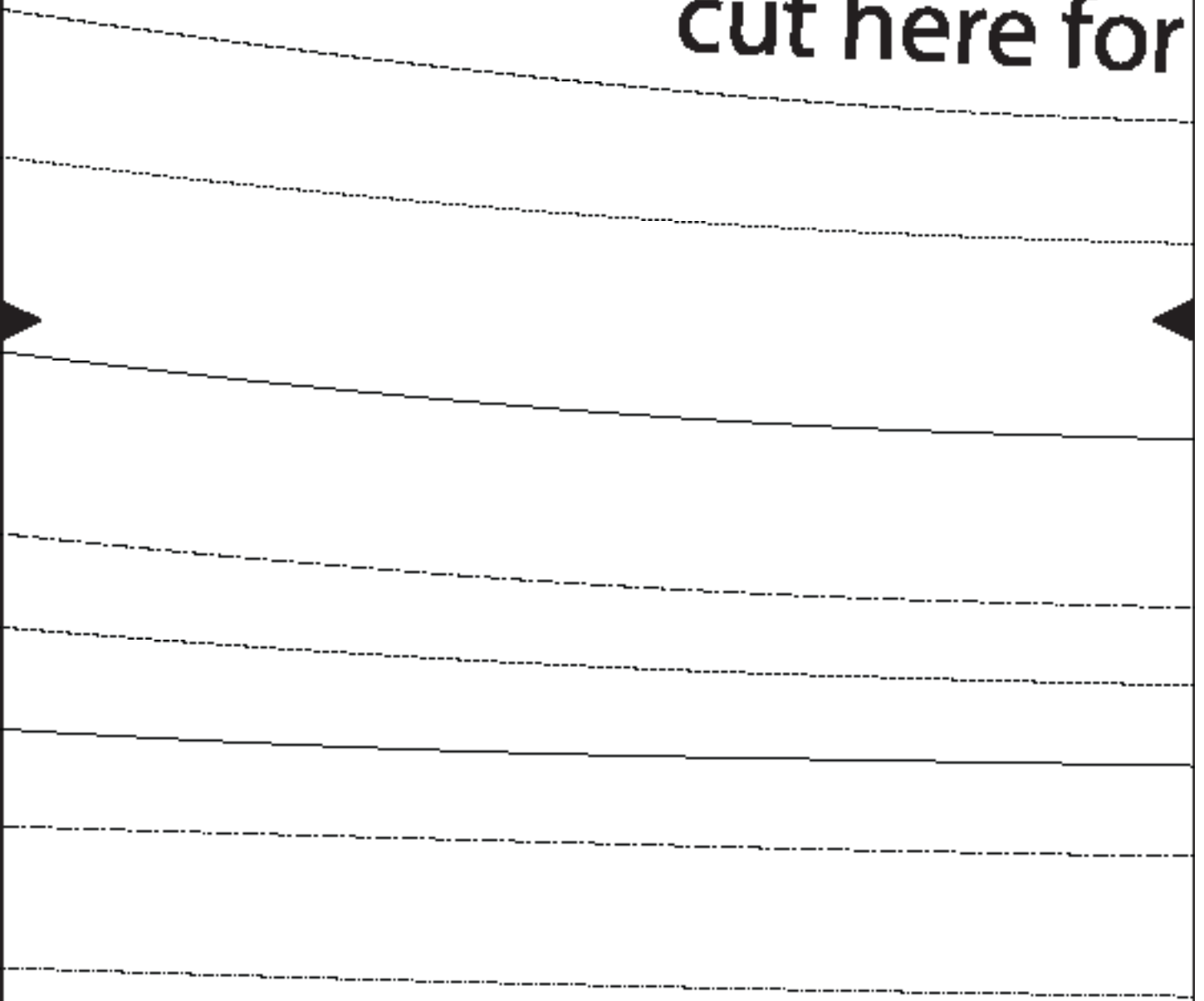
37



38

39

cut here for



40

dress lengths

xxxs

xxs

s

m

l

xl

xxl

xxxl

5

m

l

xl

xxl

xxxl

41



42

A large, bold black number '43' is centered on the page. The number is surrounded by dashed lines that follow its outline, intended for tracing. Small black triangles are placed at the top, bottom, left, and right corners of the page, pointing towards the center, likely to indicate where to fold the paper.

43



44